



Illinois Shines

Building Our Solar Future

Expansions, Co-Location, and Size Changes

Presented By:

Julie Hurewitz

Small DG Sector Strategist

Expanded Systems

Definition:

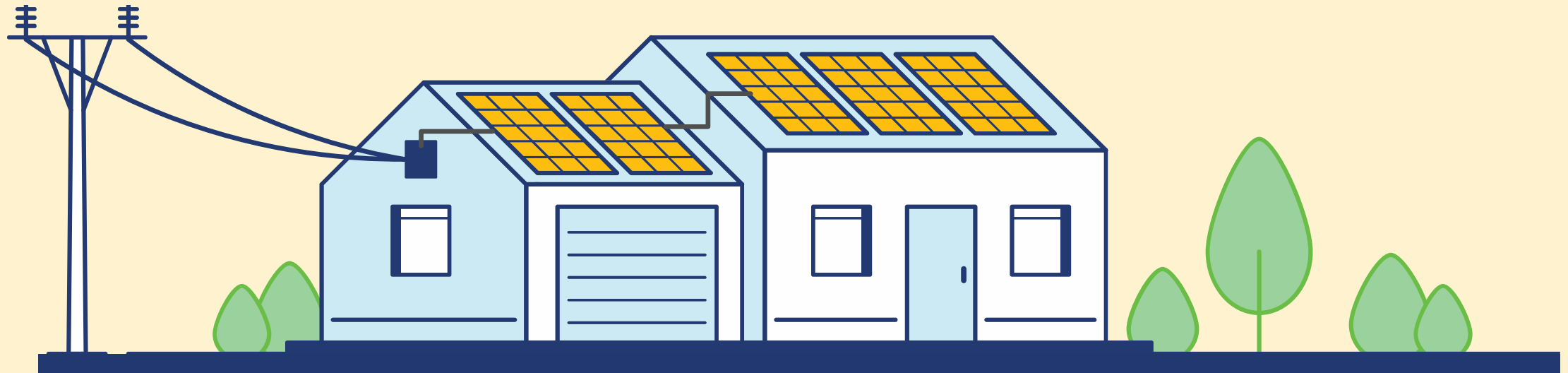
New addition added to pre-existing Illinois Shines contracted project

Size Limit:

Total capacity of project and its expansion(s) cannot exceed 5MW

Interconnection:

Same interconnection point as original system (secondary system relies on original system to be interconnected)



Co-Locations Systems

Definition:

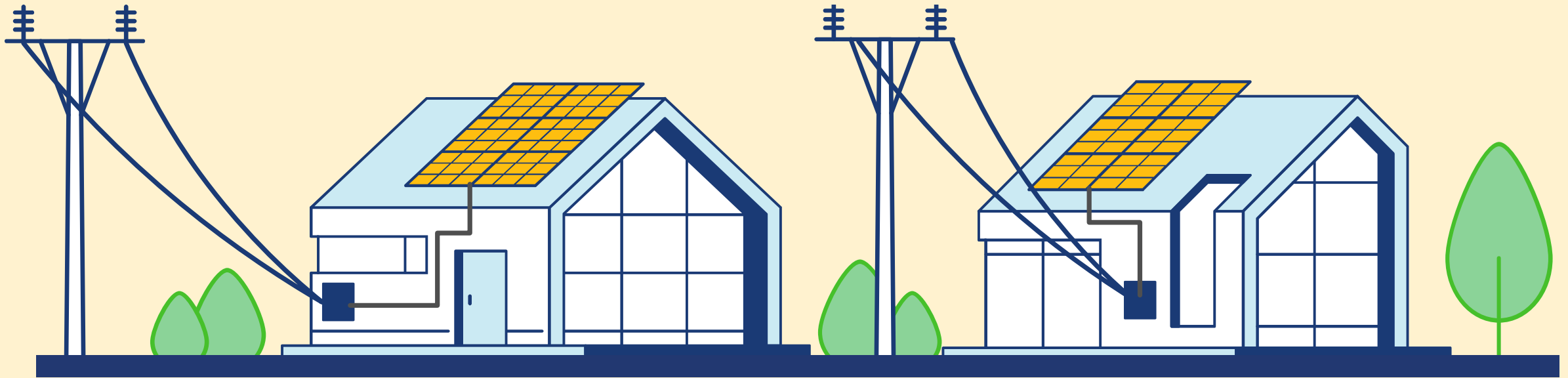
More than one Illinois Shines project at a single location that belong to the same entity or its affiliates.

Size Limit:

Total capacity of co-located projects cannot exceed 5MW

Interconnection:

Separate interconnection points (each system functions independent of each other)



Expansions and Co-Locations

Expansions

The price of the expansion system is based on the combined size. The expansion price will be adjusted to account for the current block price at the size of the combined system minus the price paid to the original system.

Will not be Part I verified until the original system is Part II verified first

Must be independently metered (production meter), with a separate GATS or M-RETS ID, must be enrolled in net metering with the utility, and will be issued a new contract and/or product order independent from that of the original system.

Co-Locations

REC price for systems determined to be co-located will be based on the size category for the total size of the co-located projects by that single entity or its affiliates.

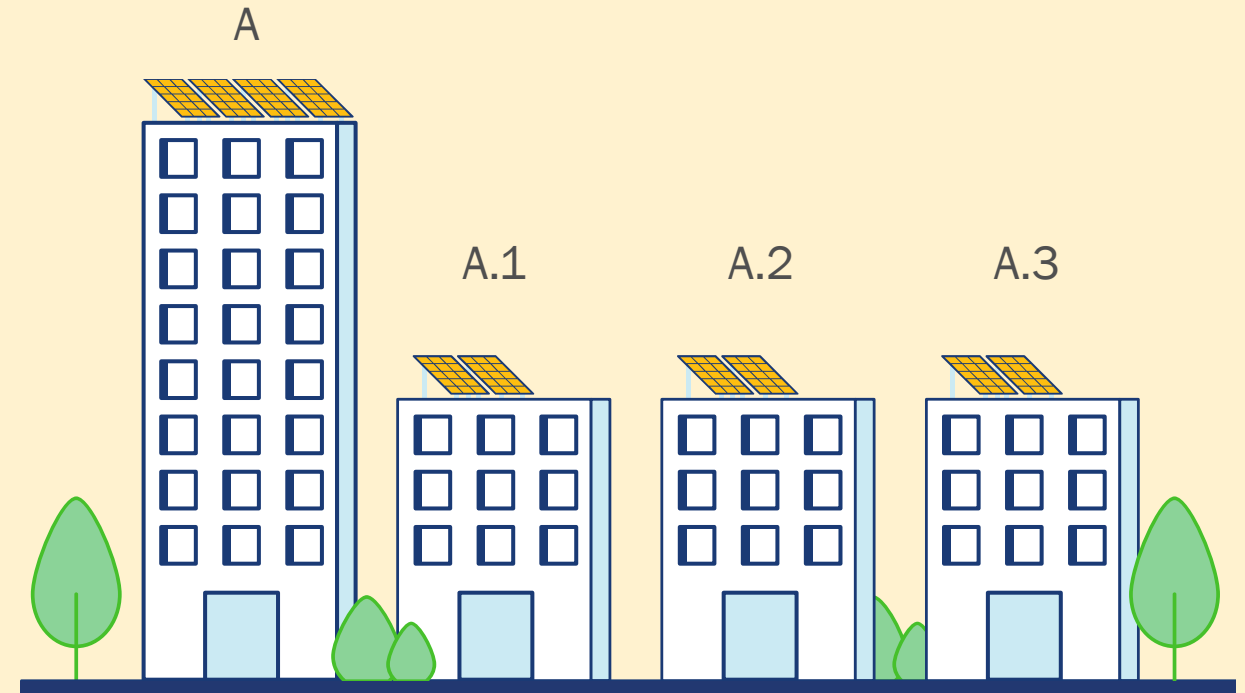
The REC price that the co-located system will receive is the REC price available for the summed system size at the time of the second project's application. A price reduction will be applied to the second project, and first project will receive standard, full REC pricing, so that total of the two systems equals co-located pricing.

Co-Location of Distributed Generation

Occurs when multiple projects developed by one entity or affiliated entities are located on a single parcel.

Parcel or parcels **can not** have been divided into multiple parcels in the two years prior to the project's application to the Program.

The Agency reserves the right to determine whether systems may be considered co-located across adjacent parcels in the case of systems serving affiliated customers

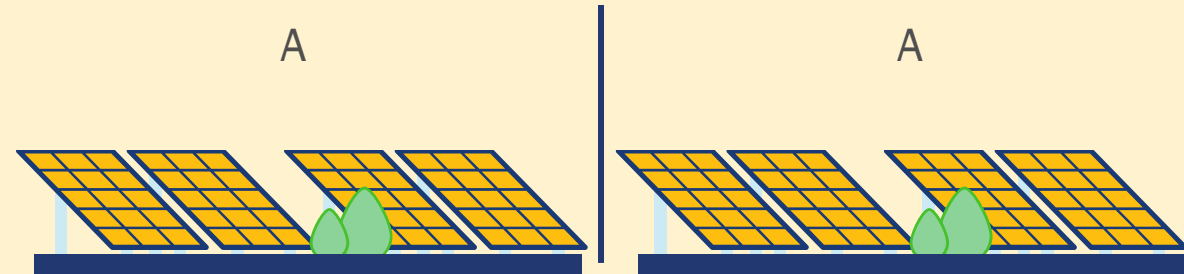
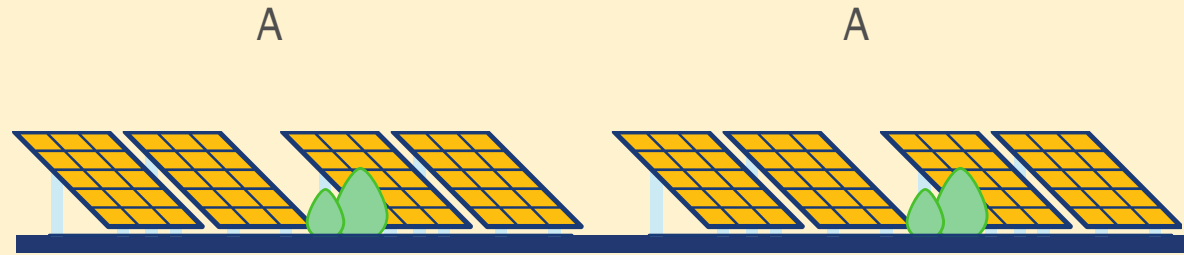


Note: Each of these systems were developed by the one entity "A" and their affiliated entities "A.1, A.2, A.3"

Co-Location of Community Solar

Considered co-located if they are located on a single parcel or adjacent parcels unless systems are confirmed to be developed by unaffiliated entities.

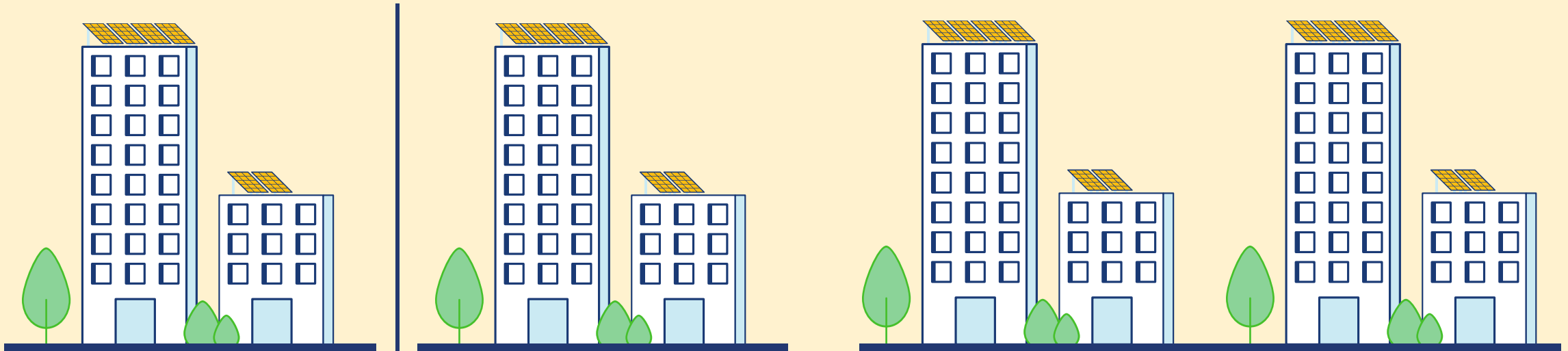
Parcel or parcels may not have been divided into multiple parcels in the two years prior to the project's application to the Program.



Note: Each of these systems were developed by the same entity, entity "A"

Co-Location of Community Solar

Projects sited on separate rooftops or structures on adjacent parcels will not be considered co-located unless located on the same building or structure. Multiple community solar projects sited on distinct structures located on a single parcel will be considered co-located.



What about Resizing?

Actual Nameplate Capacity > Proposed Nameplate Capacity

- Increase is under 5kW or 25%
- The size category does not change

This is an acceptable change

Actual Nameplate Capacity > Proposed Nameplate Capacity

- Increase is less than the larger of 5kW or 25%
- The size category does change

This is an acceptable change, but the contract price will not be adjusted to the new size category

Actual Nameplate Capacity > Proposed Nameplate Capacity

- Increase exceeds the larger of 5kW or 25%

The project will be removed from the REC Contract and will need to reapply. The Program Administrator will reach out to the Approved Vendor via *Need Info* process to confirm the size was correctly reported in Part II

Actual Nameplate Capacity < Proposed Nameplate Capacity

- Decrease is less than the larger of 5kW or 25%
- The size category does not change

This is an acceptable change

Actual Nameplate Capacity < Proposed Nameplate Capacity

- Decrease is under 5kW or 25%
- The size category does change

This is an acceptable change, but the contract price will not be adjusted to the new size category

Actual Nameplate Capacity < Proposed Nameplate Capacity

- Decrease exceeds the larger of 5kW or 25%

The project will be removed from the REC Contract and will need to reapply. The Program Administrator will reach out to the Approved Vendor via *Need Info* process to confirm the size was correctly reported in Part II

Thank you for watching!

For questions or assistance:

Email: admin@illinoisshines.com

Phone Number: (877) 783-1820

