



Illinois Shines

Building Our Solar Future

Traditional Community Solar and Community-Driven Community Solar Scoring

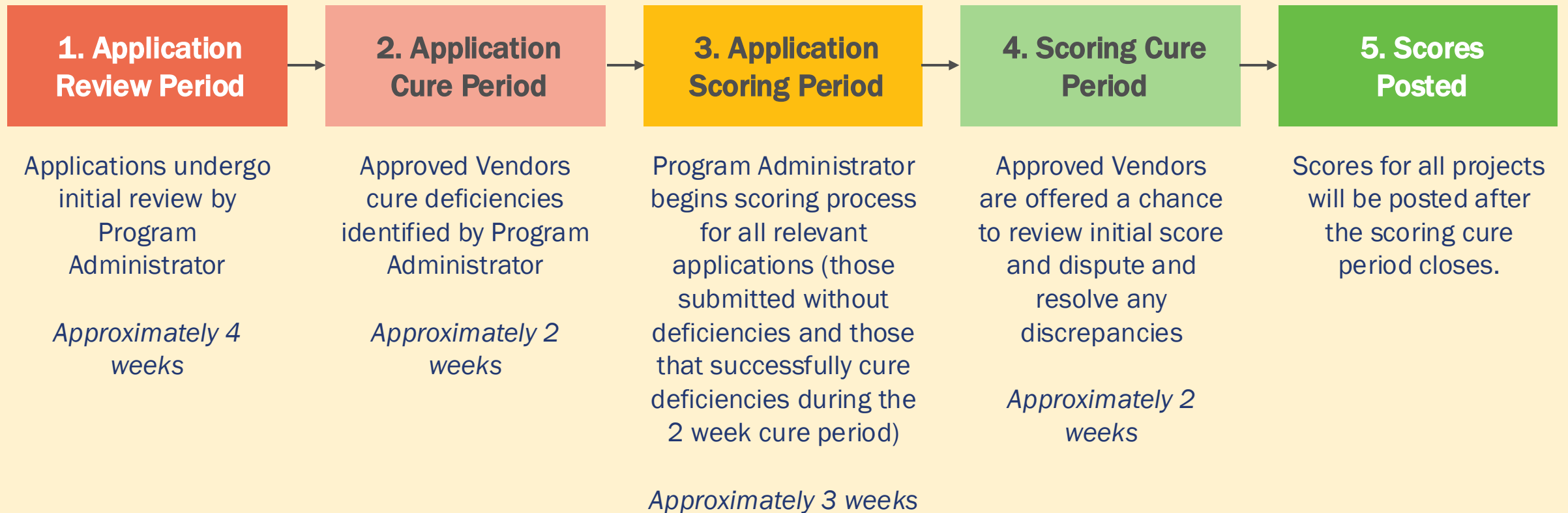
Presented By:

Jess Blue

Community Solar Sector Strategist

Proposed Schedule for Part I Application Review and Scoring

Final scores will be posted publicly after the scoring cure period closes.



Traditional Community Solar ("TCS") Scoring



Traditional Community Solar Scoring

Since there is a limited amount of capacity available in the Program for the development of Traditional Community Solar projects, a scoring mechanism has been developed for if the annual block of capacity is exceeded by applications submitted on the first day of the Program Year.

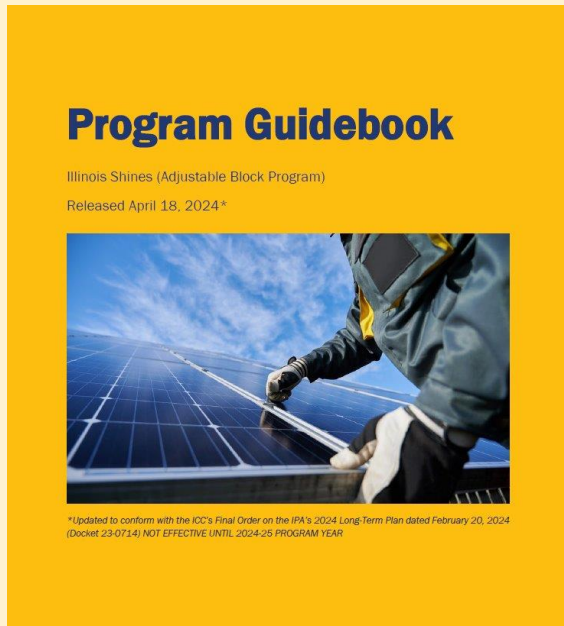
When this occurs, Part I applications submitted on the first day will be ranked by score. Projects that score a minimum 5 points will receive a spot on the waitlist.

Minimum of 5 points



Traditional Community Solar Scoring Resources

Program Guidebook
Program Documents page



Appendix E TCS Scoring
 Appendix N TCS Clarifications

Example Traditional Community
 Solar Part I Application
TCS Hub page

Program Announcement -
 TCS Part II Demonstration
 of Project Commitments
 and Permissible Changes
Program Updates page

Scoring Criterion	Topic	Documentation to be Submitted to Demonstrate Fulfillment of Part I Commitment, Including Permissible Changes
T.C.	Built Environment - Agrioltaics	Demonstration of active agricultural use: Please provide a completed agrioltaics plan outlining the commitments from the Part I agrioltaics plan that have been met including any photographs or supporting documentation. Changes to an agrioltaics plan, such as a change in crop utilization or footprint size (above the required 50% outlined in Appendix C of the Program Guidebook), are permitted. Any changes to an agrioltaics plan that occur between the Part I and Part II application must be made in writing via an updated plan sent to the Program Administrator. Please note, if points for a score were awarded, active agrioltaics needs to be present at the time of Part II application and demonstration of such must be made through the

Scoring Criteria – Built Environment

A - Contaminated Land - 2 Points *

Sited on “contaminated lands” as defined by the United States Environmental Protection Agency.

See US EPA definition for contaminated lands at epa.gov.

B - Rooftops or Other Existing Structures - 3 Points *

Sited on rooftops or other existing structures.

C - Brownfield Land - 2 Points *

Sited on a brownfield, as defined in Section 1-10 of the IPA Act and further clarified in Section 5.4.2 of the Plan.

Please see Appendix D – Brownfield Requirements of the [Program Guidebook](#).

D - Agrivoltaics - 1 Point *

Commitment to utilize agrivoltaics.

Please see Appendix C - Agrivoltaics Requirements in the [Program Guidebook](#).

E - Pollinator Friendly Habitat - 1 Point *

Commitment to pollinator friendly habitat, as defined in the Pollinator Friendly Solar Site Act (525 ILCS 55).

The pollinator friendly distinction is limited to ground mounted solar sites per 525 ILCS 55 and the pollinator friendly aspect of the project must exist on the same parcel as the solar project. Resources for how to successfully certify as pollinator friendly can be found on the [Illinois Department of Natural Resources website](#).

Scoring Criteria – Siting

A - Environmental Justice Community - 2 Points

Sited in an Environmental Justice Community or an R3 area.

B - Non Profit or Public Entity - 2 Points *

Sited on land owned by a non-profit or public entity.

C - Counties without a TCS or CDCS Project - 2 points

Sited in a county (or a township within Cook, DuPage, Kane, Lake, McHenry, or Will County) that does not currently have a community solar project that was approved by the ICC for a REC contract under the Illinois Shines Program at the time of application.

A map of Environmental Justice Communities as defined by the IPA through its Illinois Solar for All program can be found on the [Illinois Solar for All website](#).

[Map for R3 areas](#)

Multiple projects in a given county or township that does not presently feature a community solar project either under contract or waitlisted may receive points in this category for the current Program Year. [Project application reports](#) will be used to verify this information.

Scoring Criteria – Equity Eligible Contractors

A - EEC Certified Approved Vendor & All Project Development Work - 4 Points *

Project is developed by an EEC certified Approved Vendor and can demonstrate contractual commitments for all project development work to be performed by EEC certified Designees.

B - EEC or Non-EEC Certified Approved Vendor & 75% or more - 3 Points *

Project is developed by a non-EEC certified Approved Vendor and can demonstrate contractual commitments for all project development work to be performed by EEC certified Designees.

C - EEC or Non-EEC Certified Approved Vendor & at least 50% to 75% - 2 Points *

Project is developed by an EEC certified Approved Vendor and the contractual commitments for EEC certified Designee(s) that work on the project represent 50% or more of the project's REC Contract value.

D - EEC or Non-EEC Certified Approved Vendor & at least 25% to 50% - 1 Points *

Project is developed by a non-EEC certified Approved Vendor and the contractual commitments for EEC certified Designee(s) that work on the project represent 50% or more of the project's REC Contract value.

None

Project is developed by an EEC certified Approved Vendor and can demonstrate contractual commitments for all project development work to be performed by EEC certified subcontractor(s) and/or Designee(s).

Project is developed by an EEC certified Approved Vendor or a non-EEC certified Approved Vendor and the contractual commitments for EEC certified subcontractor(s) and/or Designee(s) that all project development work represents at least 75% or more of the project's REC Contract value.

Scoring Criteria – Equity Eligible Contractors

A - EEC Certified Approved Vendor & All Project Development Work - 4 Points *

Project is developed by an EEC certified Approved Vendor and can demonstrate contractual commitments for all project development work to be performed by EEC certified Designees.

B - EEC or Non-EEC Certified Approved Vendor & 75% or more - 3 Points *

Project is developed by a non-EEC certified Approved Vendor and can demonstrate contractual commitments for all project development work to be performed by EEC certified Designees.

C - EEC or Non-EEC Certified Approved Vendor & at least 50% to 75% - 2 Points *

Project is developed by an EEC certified Approved Vendor and the contractual commitments for EEC certified Designee(s) that work on the project represent 50% or more of the project's REC Contract value.

D - EEC or Non-EEC Certified Approved Vendor & at least 25% to 50% - 1 Points *

Project is developed by a non-EEC certified Approved Vendor and the contractual commitments for EEC certified Designee(s) that work on the project represent 50% or more of the project's REC Contract value.

None

Project is developed by an EEC certified Approved Vendor or a non-EEC certified Approved Vendor and the contractual commitments for EEC certified subcontractor (s) and/or Designee(s) that all project development work represents at least 50% and up to 75% of the project's REC Contract value. (Add 2 points)

Project is developed by an EEC certified Approved Vendor or a non-EEC certified Approved Vendor and the contractual commitments for EEC certified subcontractor(s) and/or Designee(s) that all project development work represents at least 25% and up to 50% of the project's REC Contract value. (Add 1 point)

Scoring Criteria – Interconnection Status

A - Valid Interconnection Agreement - 1 Point *

Project has a valid interconnection agreement at the time of application.

B - Top Two Queue Position - 2 Points * ←

Project has a top-two queue position among community solar projects on a substation on the date of the application.

C - Recency of Interconnection Agreement - 1 Points

PA Admin staff – not the AV – compares interconnection dates between all TCS applications, thus there is no checkbox for this sub-category. Refer to Traditional Community Solar Project Selection Final Proposal for details.

Demonstration of queue position among other community solar projects can be accomplished through a snapshot of the interconnection queue (taken after interconnection agreement execution), verification from interconnecting utility, or other supporting materials, if applicable, submitted with a project application and accompanying certification.

Part II Application – Demonstration of Commitments and Permissible Changes

Any inability to meet Part I commitments or Part I commitments allowed a permissible change is considered an event of default under the REC Delivery Contract.

Scoring Criterion	Topic	Documentation to be Submitted	Permissible Changes
1.c	Built Environment – Agrivoltaics	<ul style="list-style-type: none">• Completed agrivoltaics plan.• If points for grazing were awarded, active grazing needs to be present at the time of Part II application.	<ul style="list-style-type: none">• Changes to an agrivoltaics plan, such as a change in crop utilization or footprint size are permitted.



Part II Application – Demonstration of Commitments and Permissible Changes

Scoring Criterion	Topic	Documentation to be Submitted	Permissible Changes
1.d	Built Environment – Pollinator Friendly Habitat	<ul style="list-style-type: none"> Copy of a submitted Illinois Planned Pollinator Habitat on Solar Sites Scorecard from the Department of Natural Resources (“DNR”) with a passing score of at least 85 points. 	<ul style="list-style-type: none"> Changes to a Pollinator Friendly Habitat plan, such as a change in crop utilization, are permitted.
3.a-d	Equity Eligible Contractor	<ul style="list-style-type: none"> Please submit the agreements (including the value of work performed). 	<ul style="list-style-type: none"> Substitution of the EEC(s) that will support a project due to unforeseen circumstances can be made.



View form at dnr.illinois.gov/conservation/pollinatorscorecard.html



Community-Driven Community Solar ("CDCS") Scoring



Community-Driven Community Solar Scoring

Upon closing of the 90-day application window, Part I applications will be reviewed and scored with projects selected from the application pool in the order of highest to lowest score until the block capacity is fully allocated.

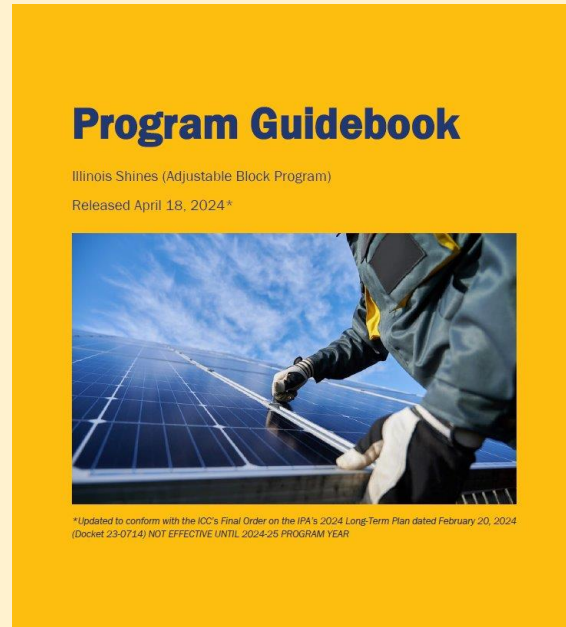
A minimum score of 6 points must be achieved to be eligible for a REC Contract in the CDCS category. Projects must score a minimum of 10 points to receive a spot on the waitlist.

Minimum of 10 points



Community-Driven Community Solar Scoring - Resources

Program Guidebook
Program Documents page



Appendix F Community-Driven
Community Solar Scoring
Criteria

Program Announcement -
CDCS Part II Demonstration of Project
Commitments and Permissible Changes
Program Updates page

Community-Driven Community Solar ("CDCS") – Part II Demonstration of Project Commitments and Permissible Changes

June 28, 2024

[< Back to Updates](#)

All Community-Driven Community Solar ("CDCS") projects submitted during or after the 2022-23 Program Year will be evaluated against the scoring guidelines outlined in Appendix F of the Program Guidebook. At Part II application review, the Program Administrator will request confirmation that any commitments made in the Part I application were fulfilled throughout project development and installation. The Program Administrator will only enforce completion of items proposed in the Part I narrative application and awarded points in the Community Driven Community Solar ("CDCS") Part I scoring process.

Any changes to commitments made in the Part I application submission which resulted in more favorable scoring (and thus a higher likelihood of contract award) will be considered an event of default under the REC Delivery Contract resulting in the full forfeiture of collateral, with the system unable to be Part II verified.

At Part II application submission, please submit a detailed narrative demonstrating how the Part I scoring commitments have been achieved and include supporting documentation. The Program Administrator may request additional information during the Part II review process. The scoring commitments must be approved by the Program Administrator during the Part II review process, prior to Part II Verification of the project.

Please note: The IPA Act defines "Community" as a social unit in which people come together regularly to effect change; a social unit in which participants are marked by a cooperative spirit, a common purpose, or shared interests or characteristics, or a space understood by its residents to be delineated through geographic boundaries or landmarks. This definition was utilized to assess benefits and award points for all projects, including those submitted in the 2022-23 Program Year.

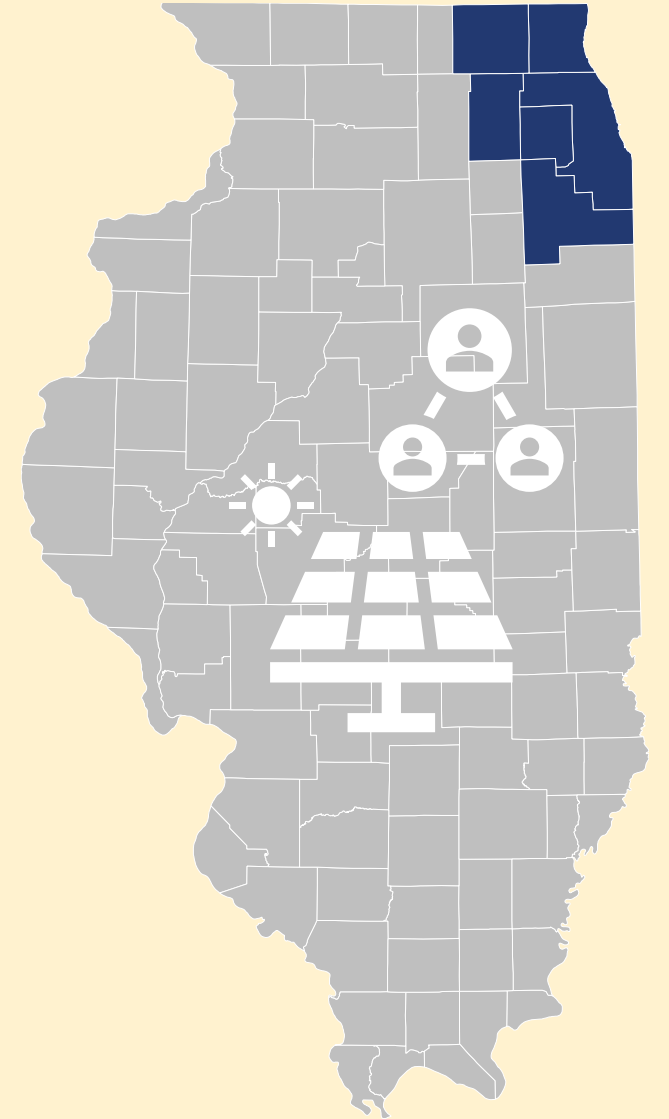
Approved Vendors must submit proper documentation for each scoring criterion sought based on the following table:

Primary Scoring Criterion	What should be submitted at Part II
---------------------------	-------------------------------------

Primary Selection Criteria – Community Ownership or Wealth-Building

In Cook, DuPage, Kane, Lake, McHenry, and Will Counties, “community” will be limited to township as these are the most populous counties in the state. In all other counties, community will be considered the whole county.

Criteria	1 point	2 points	3 points	4 points
A. Community ownership or community wealth-building.	50% ownership.	60% ownership.	70% ownership.	80% and up ownership.



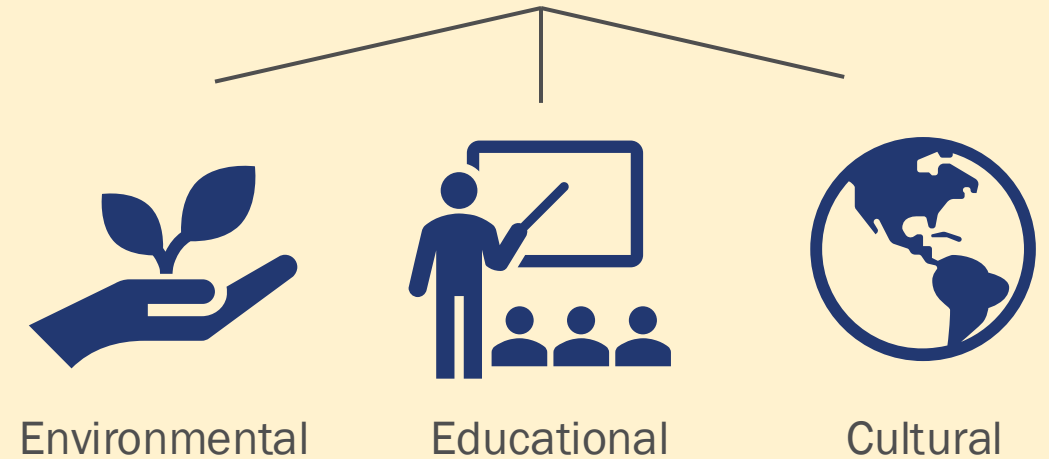
Primary Selection Criteria – Direct and Indirect Benefits

Criteria	1 point	2 points	3 points	4 points
B. Additional direct and indirect benefits.	20% of REC Contract value.	25% of REC Contract value.	30% of REC Contract value.	More than 35% of REC Contract value.

Direct Benefits:

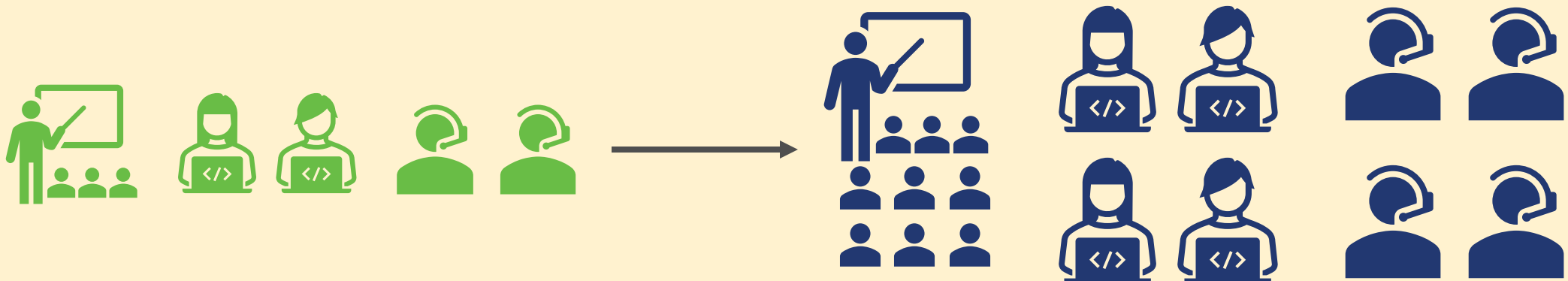


Indirect Benefits:



Primary Selection Criteria – Project Involvement

Criteria	1 point	2 points	3 points	4 points
C. Meaningful involvement in project organization and development.	3 or fewer community members or organizations engaged in Moderate project organization and development.	3 or fewer community members or organizations engaged in Substantial project organization and development.	4 or more community members or organizations engaged in Moderate project organization and development.	4 or more community members or organizations engaged in Substantial project organization and development.



Primary Selection Criteria – Project Engagement

Criteria	1 point	2 points	3 points	4 points
D. Engagement in project operations and management.	Minimal community members' or organizations' involvement or plans for involvement in project operations and management.	Moderate community members' or organizations' involvement or plans for involvement in project operations and management.	Substantial community members' or organizations' involvement or plans for involvement in project operations and management.	Extensive or more community members' or organizations' involvement or plans for involvement in project operations and management.



Primary Selection Criteria – RFP

Criteria	1 point	2 points	3 points	4 points
E. Whether the project is developed in response to a site-specific Request for Proposal (“RFP”) developed by community members, or a non-profit organization or public entity located in or serving the community.				Was indeed developed in response to site-specific RFP.



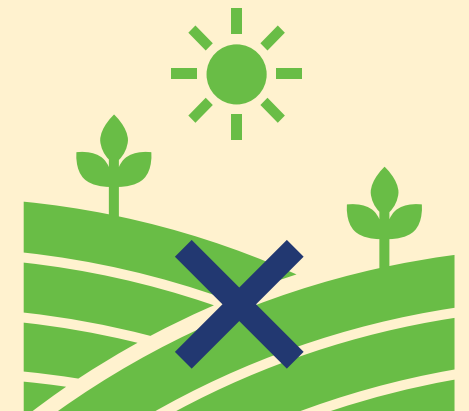
Secondary Selection Criteria

Criteria	1 point	2 points
A. Projects that are developed in collaboration with or to provide complementary opportunities for the listed programs.	Provide complementary opportunities to listed programs.	Developed in collaboration w/listed programs.
B. Projects that increase the diversity of locations of community solar projects in Illinois, including by locating in urban areas and population centers.	Population of locality is 50,000 – 69,999 (Locality meaning city, town, or village).	Population of locality is 70,000 or more (Locality meaning city, town, or village).



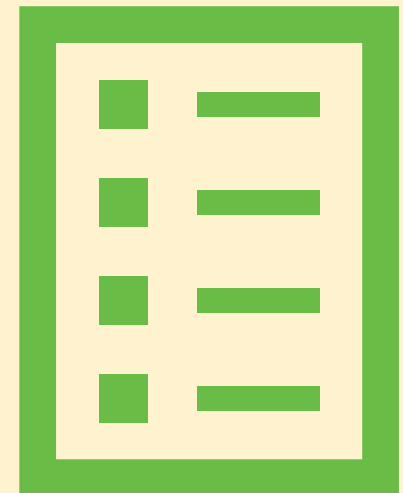
Secondary Selection Criteria

Criteria	1 point	2 points
C. Projects that are located in Equity Investment Eligible Communities (“EIEC”).		Whole project needs to be sited in EIEC; projects that are only partially in an EIEC will be reviewed on case-by-case basis.
D. Projects that are not greenfield projects.		Definition of greenfield: Greenfield project means a project proposed at a site that is either previously undeveloped land or agricultural land and that does not meet the definition of a brownfield site.



Secondary Selection Criteria

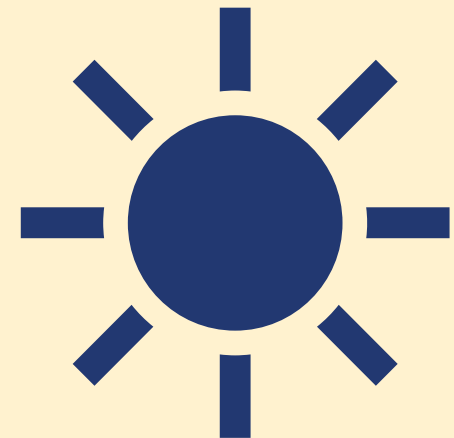
Criteria	1 point	2 points
E. Projects that serve only local subscribers.		Need to serve local subscribers for the length of REC Contract.
F. Projects that have a nameplate capacity that does not exceed 500 kW.		Nameplate capacity (project AC size) is 500 kW or less.
G. Projects that are developed by an Equity Eligible Contractor.		All development work is done by the EEC.
H. Projects that otherwise meaningfully advance the goals of providing more direct and tangible connection and benefits to the communities which they serve or in which they operate and increasing the variety of community solar locations, models, and options in Illinois.	Need to both provide connection/benefits OR increase variety of locations/models/options.	Need to both provide connection/benefits AND increase variety of locations/models/options.



Part II Application Demonstration of Commitments and Permissible Changes

Any changes to commitments made in the Part I application submission which resulted in more favorable scoring (and thus a higher likelihood of contract award) will be considered an event of default under the REC Delivery Contract.

Primary Scoring Criterion	Documentation to be Submitted
A. Community ownership or community wealth-building.	<ul style="list-style-type: none">• Please detail how the percent ownership claimed has been achieved and provide supporting documentation.• May include proof of ownership by community residents or non-profit organizations and demonstration of decision-making ability and participation.



Part II Application Demonstration of Commitments and Permissible Changes

Primary Scoring Criterion	Documentation to be Submitted	Permitted Changes
B. Additional direct and indirect benefits.	<ul style="list-style-type: none">• Show that the commitments were maintained, addressing each commitment.	<ul style="list-style-type: none">• The total local contributions of the contract value must be maintained, but changes to the specific contributions and timelines proposed in the narrative are permitted.



Part II Application Demonstration of Commitments and Permissible Changes

Primary Scoring Criterion	Documentation to be Submitted	Permitted Changes
C. Meaningful involvement in project organization and development.	<ul style="list-style-type: none">Detail the involvement that occurred during project organization and development.	<ul style="list-style-type: none">Small changes from Part I are permitted if the overall level of commitment is maintained.
D. Engagement in project operations and management.	<ul style="list-style-type: none">Detail the existing and planned future engagement that will occur throughout the REC Contract.	<ul style="list-style-type: none">Small changes from Part I are permitted if the overall level of commitment is maintained.



Part II Application Demonstration of Commitments and Permissible Changes

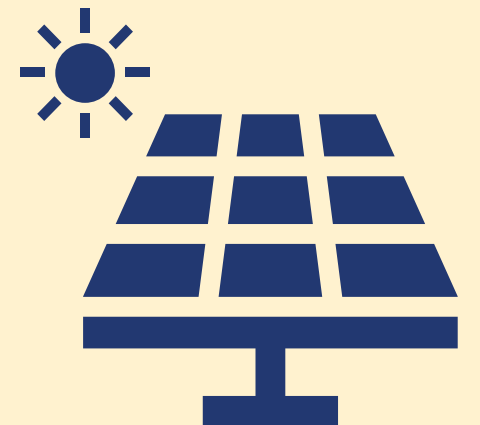
Any changes to commitments made in the Part I application submission which resulted in more favorable scoring (and thus a higher likelihood of contract award) will be considered an event of default under the REC Delivery Contract.

Secondary Scoring Criterion	Documentation to be Submitted
A. Projects that are developed in collaboration with or to provide complementary opportunities for the listed programs.	<ul style="list-style-type: none">• Demonstrate how the project has collaborated with or provided complementary opportunities for these programs.



Part II Application Demonstration of Commitments and Permissible Changes

Secondary Scoring Criterion	Documentation to be Submitted
E. Projects that serve only local subscribers.	<ul style="list-style-type: none">This information will be verified during Part II subscriber verification.
G. Projects that are developed by an Equity Eligible Contractor.	<ul style="list-style-type: none">Demonstrate that all “project development work” has been completed by the Equity Eligible Contractor.
H. Projects that otherwise meaningfully advance the goals of providing more direct and tangible connection and benefits to the communities.	<ul style="list-style-type: none">Demonstrate via narrative and relevant supporting documentation and a plan to continue this work throughout the life of the project.



Thank you for watching!

For questions or assistance:

Email: admin@illinoisshines.com

Phone Number: (877) 783-1820

